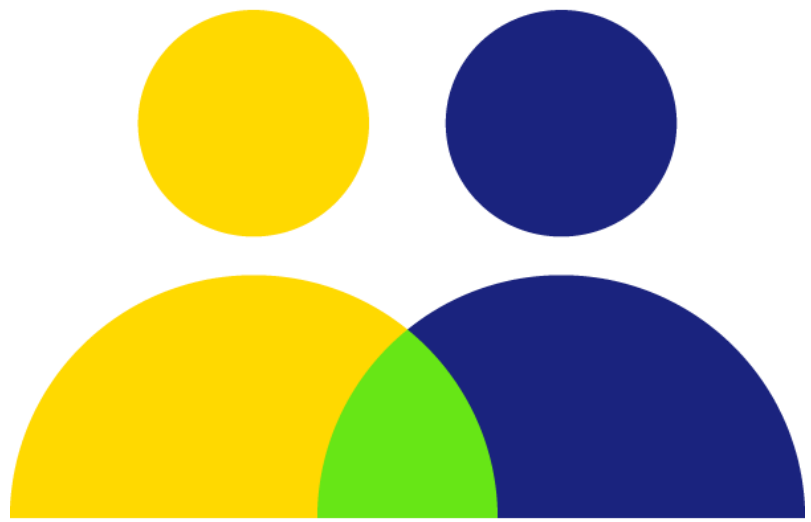




Membership Fees 2021



Membership Category	Annual Turnover	Annual Fee
Very large corporate	>£250m	£18,800
Large corporate	£50-250m	£13,500
Intermediate corporate	£10m-50m	£7,500*
Medium corporate	£2m-10m	£2,975
Small corporate	£500k -£2m	£1,015
Small business	<£500k	£540*
Micro business	<£150k	£380*
Associate (non-profit) ¹	n/a	£700
Associate (commercial) ²	n/a	£4,000 - £12,000
Tech innovator ³	£0k	£0

*Discounts available

¹Associate (non-profit) is for academic institutions, public bodies and voluntary organisations; we also extend this category to global businesses that are pre-revenue in the UK.

²Associate (commercial) is for leading businesses seeking to build their brand visibility and proactively engage businesses in the solar and storage industry, and comes with a package of tailored support.

³Innovative tech businesses with income <£500k (email membership@solarenergyuk.org for eligibility criteria)

Discounts

A limited number of legal advisers and business consultancies can receive a discount of up to 50% if hosting Solar Energy UK member meetings and/or providing pro bono support to the association.

Small and micro business members with turnover <£500 are entitled to a £100 annual discount and other benefits when also registered with the Microgeneration Certification Scheme and, by extension, the Renewable Energy Consumer Code.

Apply

To sign up for membership, visit our website: solarenergyuk.org/membership

For further information contact membership@solarenergyuk.org

Terms and Conditions

1. Your application for membership will be assessed against SOLAR ENERGY UK's Articles of Association which are available on request.
2. SOLAR ENERGY UK reserves the right to increase membership fees and at relevant annual renewal dates in line with members' latest reported turnover. Affected members will be given at least four weeks' notice of any increase in the membership fee.
3. Membership is on an annual basis and paid upfront for 12 months from the date of joining. Membership will automatically renew unless the Member provides written notice to the CEO not less than three months prior to the renewal of their intention to resign their membership.
4. Standard terms are for members to pay their subscriptions within 30 days of renewal. New members who join must pay their subscriptions within 30 days of invoice. Failure to comply with standard terms may incur a 15% surcharge and/or the withdrawal of services.
5. All fees exclude VAT, which will be added at the prevailing rate.
6. Corporate membership categories are determined by reference to annual turnover.
7. Residential installers who wish to join SOLAR ENERGY UK must also be Microgeneration Certification Scheme registered.
8. SOLAR ENERGY UK is entitled to terminate companies from SOLAR ENERGY UK membership if they are expelled from the Microgeneration Certification Scheme or a consumer code, without reimbursing membership fees.
9. A Member who resigns from membership will be liable to pay all arrears of subscriptions due to the SOLAR ENERGY UK.
10. The By-Laws of the SOLAR ENERGY UK's website can be obtained by members on request.
11. Members agree to adhere to the Articles of Association for SOLAR ENERGY UK, which will be provided to members periodically and on request.
12. Details of corporate members, as provided by the member in question, are held by SOLAR ENERGY UK on its computer system, and are published in printed lists via the Internet.
13. Any agreement between a member and SOLAR ENERGY UK shall be governed by the laws of England and Wales and the member agrees to submit to the

exclusive jurisdiction of the English courts.

14. SOLAR ENERGY UK may terminate any agreement with a member at any time on giving no less than 4 weeks' notice to the member.
15. Any order placed with a member company with SOLAR ENERGY UK shall constitute a contract when the member company either signs the order or confirms their acceptance by e-mail or otherwise in writing.

Corporate membership

Corporate membership (in any category) is intended to be for the benefit of the named member company and its employees. Parent, subsidiary and other group and related companies in the same group as the member company are expected to apply for membership of SOLAR ENERGY UK in their own right to enable them to benefit from membership of SOLAR ENERGY UK and SOLAR ENERGY UK retains the right to require such companies to join SOLAR ENERGY UK or in the absence of agreement by such companies to join SOLAR ENERGY UK to restrict such companies from receiving the benefits which arise as a result of membership of SOLAR ENERGY UK. All corporate members of SOLAR ENERGY UK consent to SOLAR ENERGY UK carrying out a credit search on the partners or directors of the corporate member at any time.